

US Army Corps  
of Engineers  
Omaha District

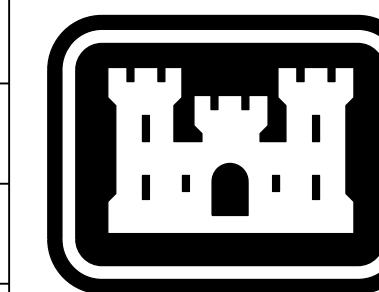
# CHAPEL - SMALL ARMY STANDARD DESIGN

## VARIOUS LOCATIONS (CONUS)

THIS PROJECT WAS DESIGNED BY THE OMAHA DISTRICT OF THE US ARMY CORPS OF ENGINEERS. THE INITIALS OR SIGNATURES AND REGISTRATION DESIGNATIONS OF INDIVIDUALS APPEAR ON THESE PROJECT DOCUMENTS WITHIN THE SCOPE OF THEIR EMPLOYMENT AS REQUIRED BY ER 1110-1-8152.

THE FOLLOWING SIGNATURES BELOW INDICATE OFFICIAL APPROVAL OF ALL DRAWINGS IN THIS SET DATED \_\_\_\_\_

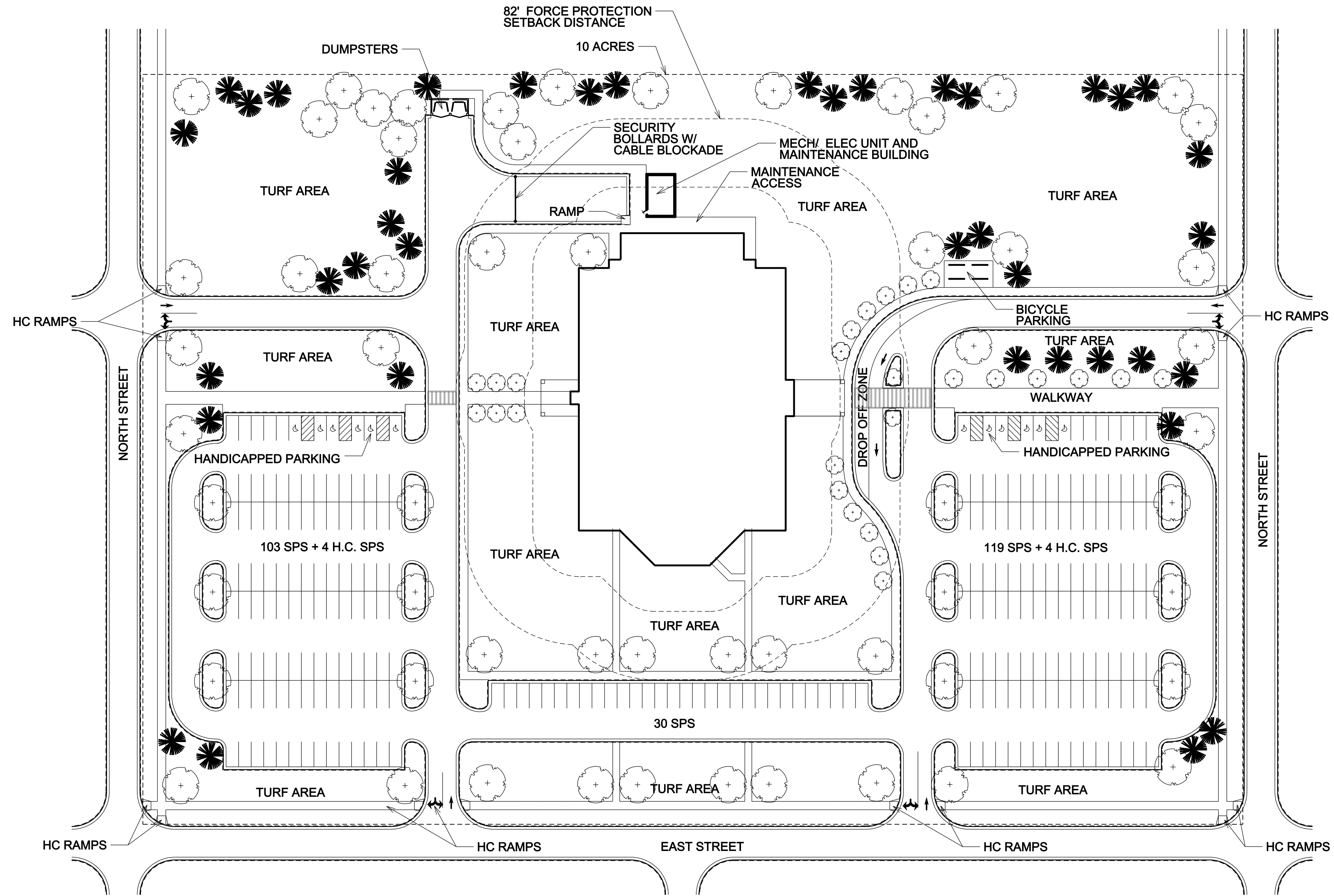
SUBMITTED BY:	RA	
CHIEF:	ARCH	SECTION
SUBMITTED BY:	PE	
CHIEF:	CIVIL	SECTION
SUBMITTED BY:	PE	
CHIEF:	ELECT	SECTION
SUBMITTED BY:	PE	
CHIEF:	ENVR	SECTION
SUBMITTED BY:	PE	
CHIEF:	MECH	SECTION
SUBMITTED BY:	PE	
CHIEF:	PLANS/SPECS	SECTION
SUBMITTED BY:	PE	
CHIEF:	STRUCT/INTER	SECTION
SUBMITTED BY:	PE	
CHIEF:	GEOT	SECTION



US Army Corps  
of Engineers  
Omaha District

FINAL DESIGN  
JULY 2012

NOTE: SEE THE ARMY STANDARD DESIGN TEXT FOR THIS FACILITY.



SMALL CHAPEL CONCEPTUAL SITE PLAN



US Army Corps of Engineers  
OMAHA DISTRICT

DESCRIPTION	DATE	APPR.	MARK

DESIGNED BY: X	DATE: FEBRUARY 2012
DWN BY: X	SOLICITATION NO.:
SUBMITTED BY: X	CONTRACT NO.:
PLOT SCALE: 1:1	FILE NUMBER:
SIZE: A3	FILE NAME: SmallChapel.dwg

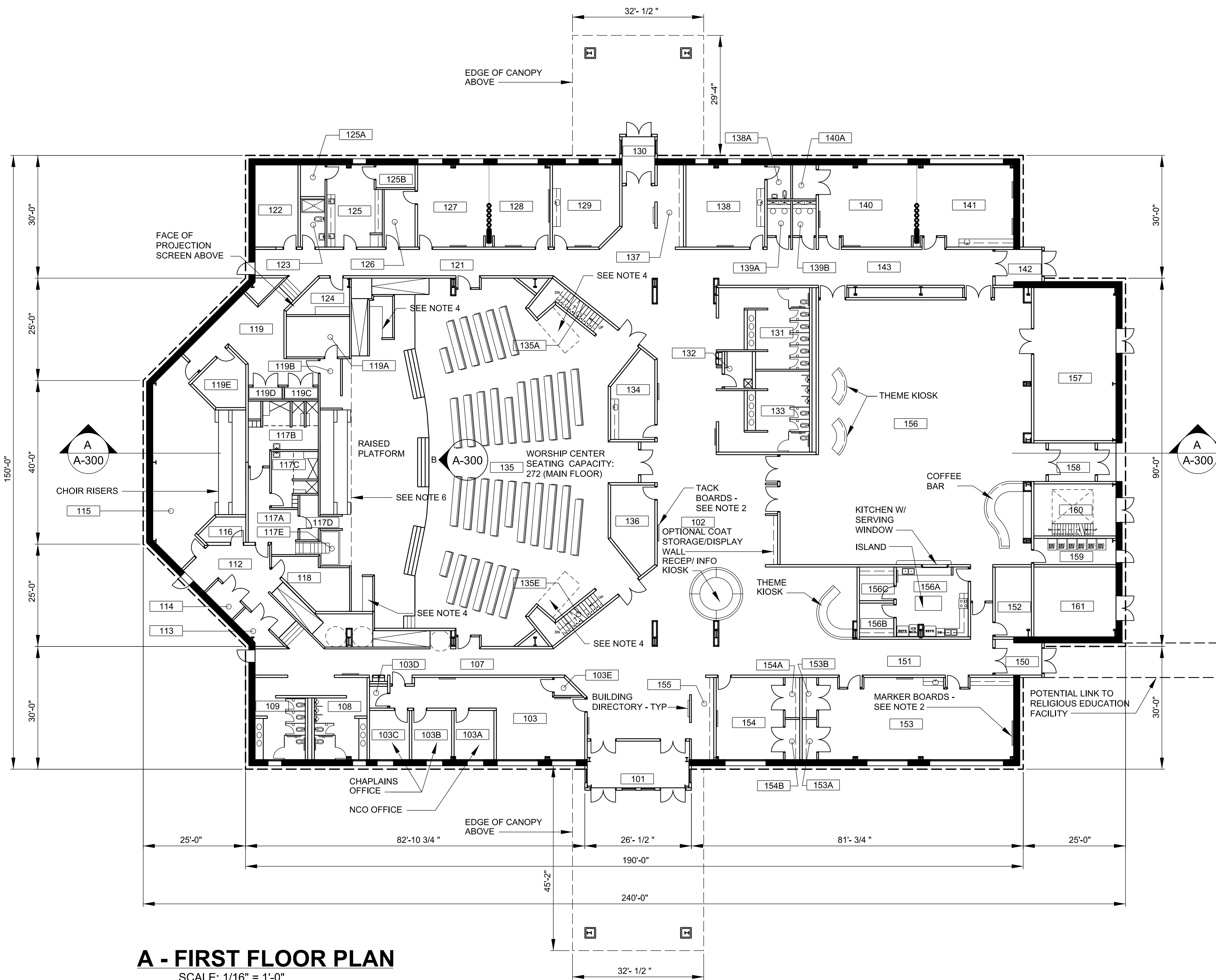
US ARMY ENGINEER DISTRICT  
CORPS OF ENGINEERS  
OMAHA, NEBRASKA

VARIOUS LOCATIONS  
3D BIM TRANSLATION  
ARMY STANDARD DESIGN  
SMALL CHAPEL  
PRIMARY EXAMPLE SITE PLAN

SHEET IDENTIFICATION  
**C-101**

ROOM #	ROOM NAME	AREA (SF)
101	VESTIBULE	284
102	LOBBY	4,222
103	ADMINISTRATIVE GROUP	576
103A	NCO	117
103B	CHAPLAIN	123
103C	CHAPLAIN	111
103D	STORAGE	25
103E	STORAGE	20
107	CORRIDOR	582
108	MEN	232
109	WOMEN	223
112	CORRIDOR	545
113	STORAGE	50
114	STORAGE	40
115	CHOIR ROOM	823
116	STORAGE	64
117A	BAPTISTERY SUITE	171
117B	MEN'S CHANGING	224
117C	WOMEN'S CHANGING	140
117D	VESTIBULE	67
117E	IMMERSION BAPTISTERY	66
118	BAPTISTERY EQUIPMENT	176
119	CORRIDOR	423
119A	STORAGE	152
119B	VESTIBULE	62
119C	ROBE STORAGE	25
119D	ROBE STORAGE	25
119E	STORAGE	128
121	CORRIDOR	518
122	INSTRUMENT STORAGE	211
123	STAFF TOILET	70
124	OFFERINGS	98
125	SACRISTY	260
125A	SACRISTY STORAGE	46
125B	SACRISTY STORAGE	53
126	RECONMEDITATION	106
127	BLESSED SACRAMENT	350
128	FLEX	299
129	NURSERY	316
130	VESTIBULE	91
131	WOMEN	393
132	JANITOR	62
133	MEN	390
134	NURSING MOTHERS	200
135	WORSHIP CENTER	5,546
135A	STAIRS	108
135B	STORAGE	152
135D	STORAGE	171
135E	STAIRS	108
136	CRY ROOM	200
137	COAT STORAGE	137
138	TODDLER ROOM	386
138A	CHILD'S TOILET	48
139A	ABLUTION	69
139B	ABLUTION	69
140	MULTIPURPOSE 1	465
140A	STORAGE	48
141	MULTIPURPOSE 2	457
142	VESTIBULE	93
143	CORRIDOR	664
150	VESTIBULE	93
151	CORRIDOR	408
152	TELECOM	151
153	MULTIPURPOSE 3	920
153A	STORAGE	35
153B	STORAGE	35
154	AV PRODUCTION	329
154A	STORAGE	35
154B	STORAGE	35
155	COAT STORAGE	110
156	ACTIVITY CENTER	3,807
156A	KITCHEN	300
156B	PANTRY 1	69
156C	PANTRY 2	69
157	ACTIVITY CENTER STORAGE	750
158	VESTIBULE	107
159	RECYCLING	128
160	MECHANICAL	255
161	ELECTRICAL	342
	NORTH CANOPY	446*
	SOUTH CANOPY	643*
	CONNECTOR LINK	332
	STORAGE SHED	150
<b>WALL AREA</b>		<b>2,777</b>
<b>TOTAL FIRST FLOOR</b>		<b>34,206</b>
<b>GRAND TOTAL - BOTH FLOORS</b>		<b>38,896</b>
<b>ROUNDED TOTAL - ENTIRE FACILITY</b>		<b>38,900</b>

\* HALF SCOPE PER ARCHITECTURE UFC 3-101-01

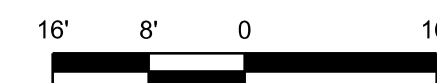


**A - FIRST FLOOR PLAN**

SCALE: 1/16" = 1'-0"

**GENERAL NOTES:**

1. REFER TO THE ARMY STANDARD AND ARMY STANDARD DESIGN DOCUMENTS FOR ALL FACILITY DESIGN REQUIREMENTS INCLUDING THOSE THAT MAY NOT BE ILLUSTRATED IN THESE PLANS.
2. THE LOCATION AND NUMBER OF BUILDING ACCESSORIES (MARKER BOARDS, TACK BOARDS, TOILET ACCESSORIES, DIRECTORIES, ETC.) IS FLEXIBLE. PLEASE SEE ROOM FURNISHING REQUIREMENTS IN STANDARD DESIGN TEXT (AS WELL AS ANY APPLICABLE CODES AND CRITERIA) FOR SPECIFIC FURNISHING REQUIREMENTS. EACH INSTALLATION MAY ADD TO THESE REQUIRED FURNISHINGS TO THE EXTENT THAT THEY DO NOT CONFLICT WITH OTHER ARMY STANDARD DESIGN REQUIREMENTS.
3. ROOM NUMBERING IS FOR REFERENCE ONLY. ACTUAL ROOM NUMBERING MAY BE ALTERED TO SUIT THE NEEDS OF THE INDIVIDUAL FACILITY OR INSTALLATION.
4. THE NUMBER AND LOCATION OF MEDIA CONSOLES IS FLEXIBLE BASED ON THE NEEDS OF EACH INSTALLATION AND USER GROUP. THIS DOCUMENT ILLUSTRATES SOME OF THE POSSIBLE LOCATIONS FOR MEDIA CONSOLES. THE BALCONY MEDIA CONTROL CONSOLE IS REQUIRED BY THE ARMY STANDARD, BUT ALL OTHERS MAY BE IMPLEMENTED AS REQUIRED TO SUIT INDIVIDUAL NEEDS.
5. THE DASHED LINE SHOWN AT PERIMETER OF FACILITY INDICATES ADDITIONAL 8" OF WALL SPACE FOR INSULATION IF NEEDED TO MEET ENERGY PERFORMANCE REQUIREMENTS. SEE ARCHITECTURAL AND MECHANICAL PORTIONS OF STANDARD DESIGN FOR ENERGY ANALYSIS INFORMATION. GRAND TOTAL FLOOR AREA INCLUDES THIS ADDITIONAL WALL WIDTH.
6. LOCATION OF OPTIONAL DROP CURTAIN AS REQUIRED PER SPECIFIC USER NEEDS.



SCALE: 1/16" = 1'-0"



US Army Corps of Engineers  
OMAHA DISTRICT

NO.	DATE	DESCRIPTION	MARK

DESIGNED BY: ACT	DATE: 2012	SOLICITATION NO.:
DRAWN BY: BRG		
CHECKED BY: BRG		
APPROVED BY: BRG		
CONTRACT NO.:		
FILE NUMBER:		
FILE NAME:		
SCALE:		

VARIOUS LOCATIONS  
3D BIM TRANSLATION - ARMY STANDARD DESIGN  
SMALL CHAPEL  
BASIC MINISTRY SERIES  
COMPOSITE  
FIRST FLOOR PLAN

SHEET IDENTIFICATION  
**A-110**



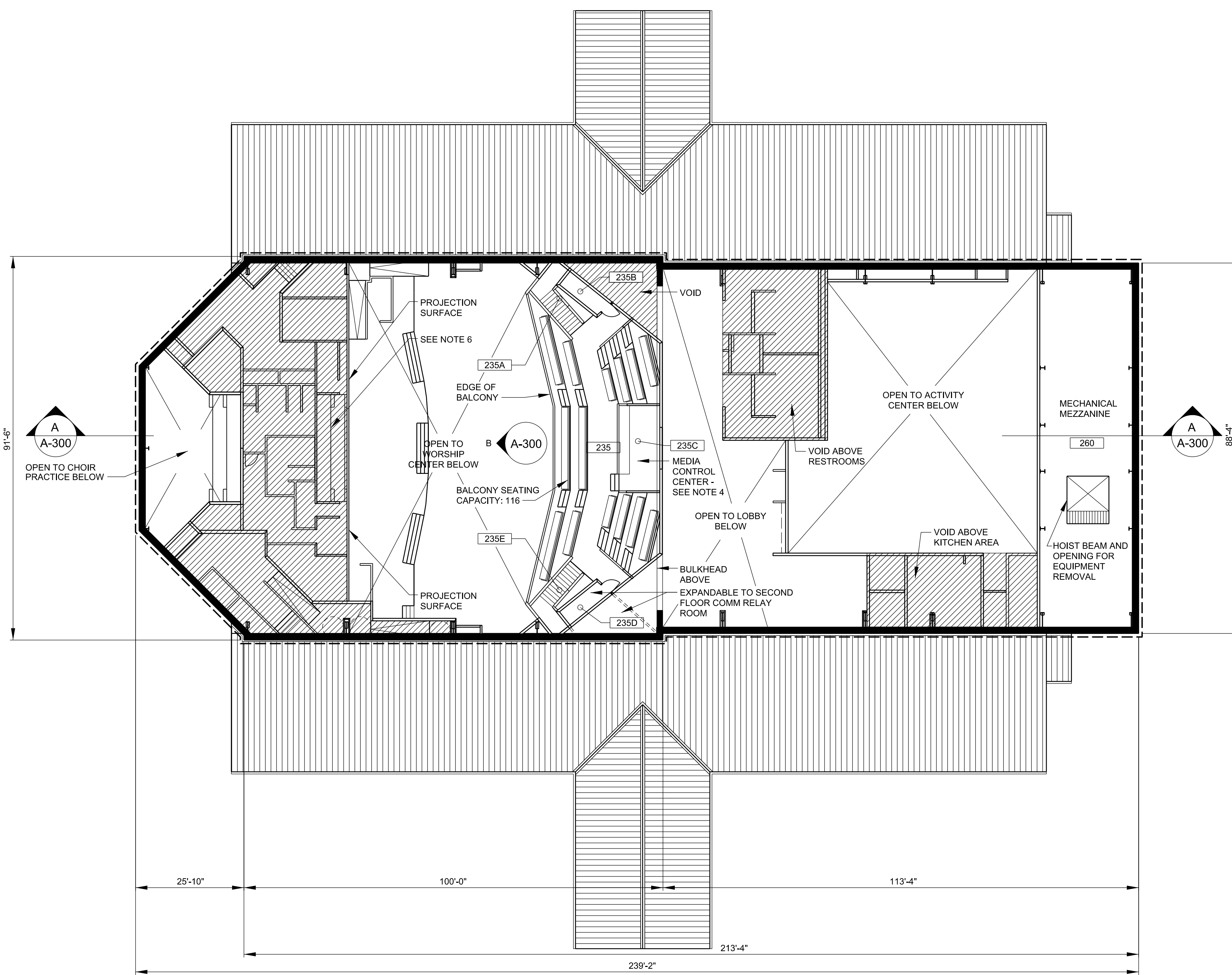
US Army Corps of Engineers  
OMAHA DISTRICT

DATE	DESCRIPTION	MARK

DESIGNED BY:	DATE: 2012
DESIGNED BY:	SOLICITATION NO.:
ACT. BY:	CONTRACT NO.:
BRG	FILE NUMBER:
SUBMITTED BY:	PLOT SCALE: PLOT DATE:
BRG	PLOT DATE:
	FILE NAME:
	34-22*

VARIOUS LOCATIONS  
3D BIM TRANSLATION - ARMY STANDARD DESIGN  
SMALL CHAPEL  
BASIC MINISTRY SERIES  
COMPOSITE  
SECOND FLOOR PLAN

SHEET IDENTIFICATION  
**A-120**



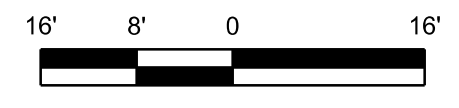
ROOM #	ROOM NAME	AREA (SF)
235	BALCONY	1,479
235A	STAIRS	126
235B	STORAGE	55
235C	MEDIA CONTROL	207
235D	STORAGE	55
235E	STAIRS	126
235F	CHOIR	417
260	MECHANICAL	1,934
WALL AREA		291
TOTAL SECOND FLOOR		4,690
GRAND TOTAL - BOTH FLOORS		38,896
ROUNDED TOTAL - ENTIRE FACILITY		38,900

\* HALF SCOPE PER ARCHITECTURE UFC 3-101-01

**A - SECOND FLOOR PLAN**

SCALE: 1/16" = 1'-0"

- GENERAL NOTES:**
- REFER TO THE ARMY STANDARD AND ARMY STANDARD DESIGN DOCUMENTS FOR ALL FACILITY DESIGN REQUIREMENTS INCLUDING THOSE THAT MAY NOT BE ILLUSTRATED IN THESE PLANS.
  - THE LOCATION AND NUMBER OF BUILDING ACCESSORIES (MARKER BOARDS, TACK BOARDS, TOILET ACCESSORIES, DIRECTORIES, ETC.) IS FLEXIBLE. PLEASE SEE ROOM FURNISHING REQUIREMENTS IN STANDARD DESIGN TEXT (AS WELL AS ANY APPLICABLE CODES AND CRITERIA) FOR SPECIFIC FURNISHING REQUIREMENTS. EACH INSTALLATION MAY ADD TO THESE REQUIRED FURNISHINGS TO THE EXTENT THAT THEY DO NOT CONFLICT WITH OTHER ARMY STANDARD DESIGN REQUIREMENTS.
  - ROOM NUMBERING IS FOR REFERENCE ONLY. ACTUAL ROOM NUMBERING MAY BE ALTERED TO SUIT THE NEEDS OF THE INDIVIDUAL FACILITY OR INSTALLATION.
  - THE NUMBER AND LOCATION OF MEDIA CONSOLES IS FLEXIBLE BASED ON THE NEEDS OF EACH INSTALLATION AND USER GROUP. THIS DOCUMENT ILLUSTRATES SOME OF THE POSSIBLE LOCATIONS FOR MEDIA CONSOLES. THE BALCONY MEDIA CONTROL CONSOLE IS REQUIRED BY THE ARMY STANDARD, BUT ALL OTHERS MAY BE IMPLEMENTED AS REQUIRED TO SUIT INDIVIDUAL NEEDS.
  - THE DASHED LINE SHOWN AT PERIMETER OF FACILITY INDICATES ADDITIONAL 8" OF WALL SPACE FOR INSULATION IF NEEDED TO MEET ENERGY PERFORMANCE REQUIREMENTS. SEE ARCHITECTURAL AND MECHANICAL PORTIONS OF STANDARD DESIGN FOR ENERGY ANALYSIS INFORMATION. GRAND TOTAL FLOOR AREA INCLUDES THIS ADDITIONAL WALL WIDTH.
  - PLENUM SPACE BEHIND THE PROJECTION SURFACE MAY BE USED FOR REAR PROJECTION AND AV EQUIPMENT.



SCALE: 1/16" = 1'-0"



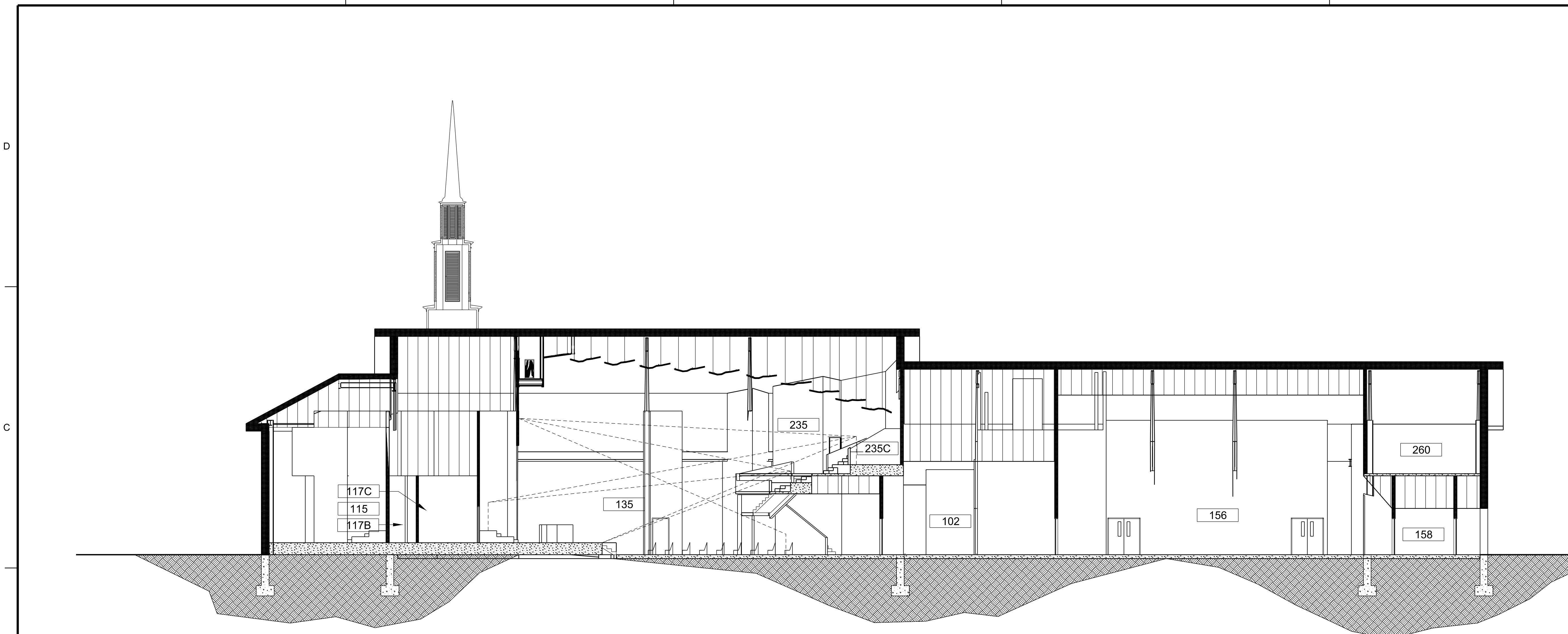
US Army Corps  
of Engineers  
OMAHA DISTRICT

DATE	DESCRIPTION	DATE	DESCRIPTION	DATE	DESCRIPTION

DESIGNED BY: ACT BRG	CUS BY: BRG	DATE: 2012 X	SOLICITATION NO.:	CONTRACT NO.:
SUBMITTED BY: BRG				
PLOT SCALE: 1:1		PLOT DATE:	PLOT DATE:	FILE NUMBER:
SIZE: 34x22"		FILE NAME:	sheet_100.dgn	

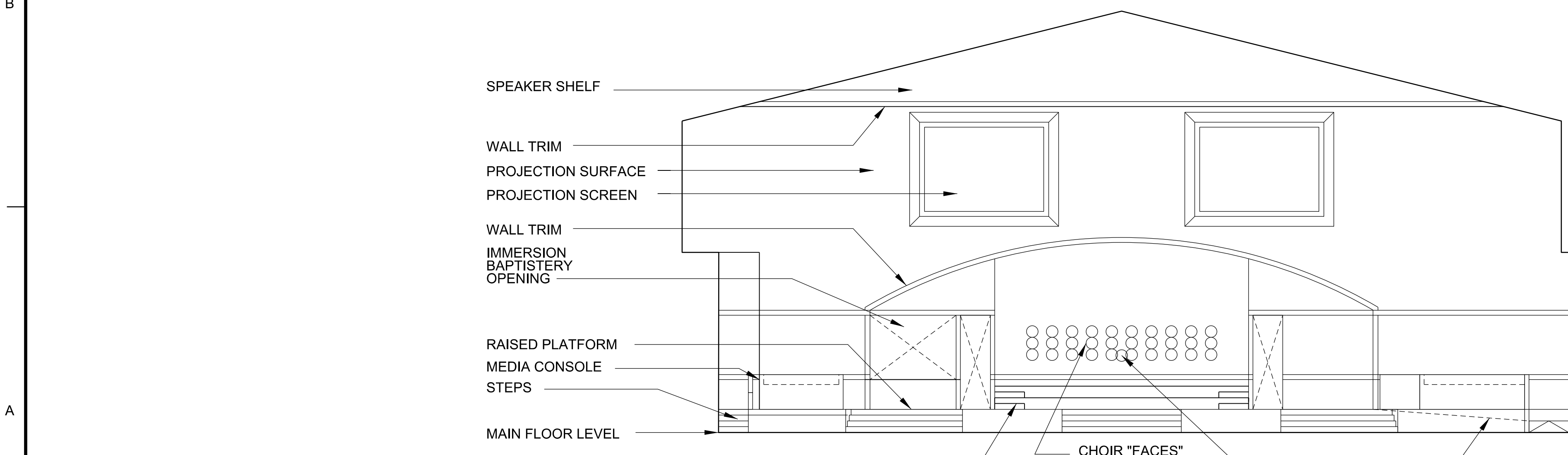
VARIOUS LOCATIONS  
3D BIM TRANSLATION - ARMY STANDARD DESIGN  
SMALL CHAPEL  
BASIC MINISTRY SERIES  
COMPOSITE  
BUILDING SECTION

SHEET  
IDENTIFICATION  
**A-300**



**A - BUILDING SECTION**

SCALE: 3/32" = 1'-0"

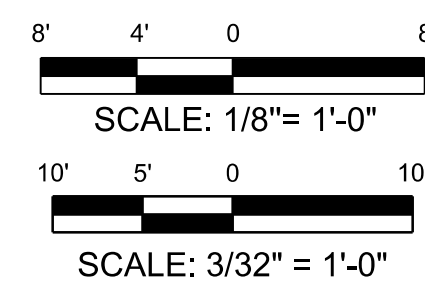


**B - WORSHIP CENTER INT ELEV**

SCALE: 1/8" = 1'-0"

**GENERAL NOTES:**

- REFER TO THE ARMY STANDARD AND ARMY STANDARD DESIGN DOCUMENTS FOR ALL FACILITY DESIGN REQUIREMENTS INCLUDING THOSE THAT MAY NOT BE ILLUSTRATED IN THESE PLANS.
- THE LOCATION AND NUMBER OF BUILDING ACCESSORIES (MARKER BOARDS, TACK BOARDS, TOILET ACCESSORIES, DIRECTORIES, ETC.) IS FLEXIBLE. PLEASE SEE ROOM FURNISHING REQUIREMENTS IN STANDARD DESIGN TEXT (AS WELL AS ANY APPLICABLE CODES AND CRITERIA) FOR SPECIFIC FURNISHING REQUIREMENTS. EACH INSTALLATION MAY ADD TO THESE REQUIRED FURNISHINGS TO THE EXTENT THAT THEY DO NOT CONFLICT WITH OTHER ARMY STANDARD DESIGN REQUIREMENTS.
- ROOM NUMBERING IS FOR REFERENCE ONLY. ACTUAL ROOM NUMBERING MAY BE ALTERED TO SUIT THE NEEDS OF THE INDIVIDUAL FACILITY OR INSTALLATION.
- MANY ASPECTS OF THE INTERIOR ELEVATIONS ARE FLEXIBLE AND MAY BE MODIFIED ON A PROJECT BY PROJECT BASIS SO AS TO IMPROVE AESTHETIC OR VISUAL CONTINUITY. ENSURE THAT PROPER LINE OF SITE IS MAINTAINED BETWEEN THE AUDIENCE AND ALL OPERATIONAL PORTIONS OF THE RAISED PLATFORM. THIS INCLUDES THE PROJECTION SCREENS, THE CHOIR RISERS, THE BAPTISTERY, AND THE SPEAKING PLATFORM. FURTHERMORE, NONE OF THE PREVIOUSLY MENTIONED FUNCTIONS SHOULD VISUALLY SCREEN ANOTHER.
- FOUNDATIONS SHOWN ARE GRAPHIC REPRESENTATIONS ONLY AND ARE NOT INTENDED TO INDICATE ANY SORT OF STRUCTURAL DESIGN APPROACH OR REQUIREMENTS.



ROOM #	ROOM NAME
101	VESTIBULE
102	LOBBY
103	ADMINISTRATIVE GROUP
103A	NCO
103B	CHAPLAIN
103C	CHAPLAIN
103D	STORAGE
103E	STORAGE
107	CORRIDOR
108	MEN
109	WOMEN
112	CORRIDOR
113	STORAGE
114	STORAGE
115	CHOIR ROOM
116	STORAGE
117A	BAPTISTERY SUITE
117B	MEN'S CHANGING
117C	WOMEN'S CHANGING
117D	VESTIBULE
117E	IMMERSION BAPTISTERY
118	BAPTISTERY EQUIPMENT
119	CORRIDOR
119A	STORAGE
119B	VESTIBULE
119C	ROBE STORAGE
119D	ROBE STORAGE
119E	STORAGE
121	CORRIDOR
122	INSTRUMENT STORAGE
123	STAFF TOILET
124	OFFERINGS
125	SACRISTY
125A	SACRISTY STORAGE
125B	SACRISTY STORAGE
126	RECON/MEDITATION
127	BLESSED SACRAMENT
128	FLEX
129	NURSERY
130	VESTIBULE
131	WOMEN
132	JANITOR
133	MEN
134	NURSING MOTHERS
135	WORSHIP CENTER
135A	STAIRS
135E	STAIRS
136	CRY ROOM
137	COAT STORAGE
138	TODDLER ROOM
138A	CHILD'S TOILET
139A	ABLUTION
139B	ABLUTION
140	MULTIPURPOSE 1
140A	STORAGE
141	MULTIPURPOSE 2
142	VESTIBULE
143	CORRIDOR
150	VESTIBULE
151	CORRIDOR
152	TELECOM
153	MULTIPURPOSE 3
153A	STORAGE
153B	STORAGE
154	AV PRODUCTION
154A	STORAGE
154B	STORAGE
155	COAT STORAGE
156	ACTIVITY CENTER
156A	KITCHEN
156B	PANTRY 1
156C	PANTRY 2
157	ACTIVITY CENTER STORAGE
158	VESTIBULE
159	RECYCLING
160	MECHANICAL
161	ELECTRICAL

### BLESSED SACRAMENT ALTERNATE LAYOUT

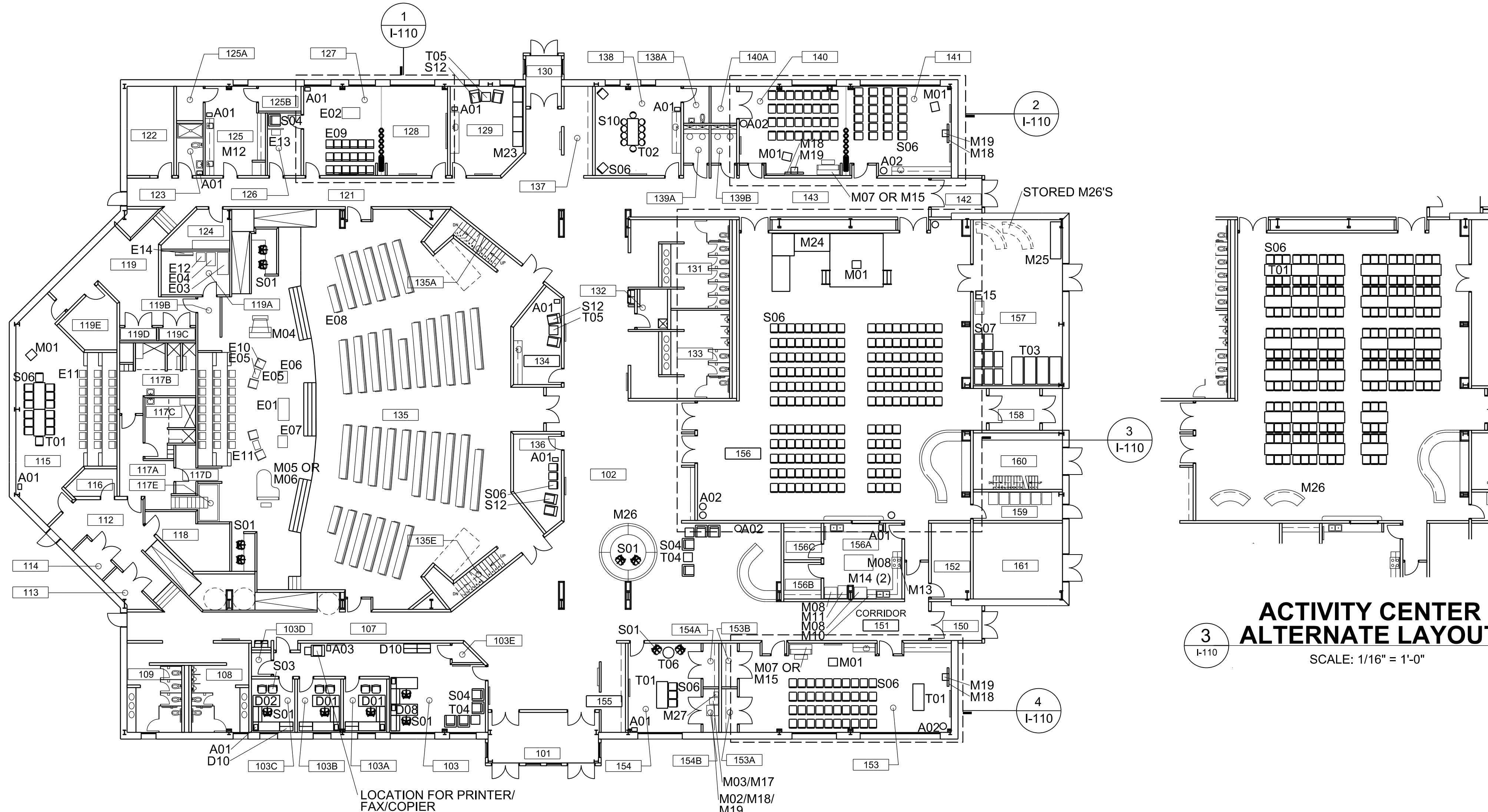
1 I-110

SCALE: 1/16" = 1'-0"

### MULTIPURPOSE 1 AND 2 ALTERNATE LAYOUT

2 I-110

SCALE: 1/16" = 1'-0"



### FIRST FLOOR FURNITURE PLAN

SCALE: 1/16" = 1'-0"

### MULTI-PURPOSE 3 ALTERNATE LAYOUT

4 I-110

SCALE: 1/16" = 1'-0"

### ACTIVITY CENTER ALTERNATE LAYOUT

3 I-110

SCALE: 1/16" = 1'-0"

#### FURNITURE AND EQUIPMENT LEGEND

##### ECCLESIASTICAL EQUIPMENT:

- E01 ALTAR
- E02 ALTAR, SMALL
- E03 COMMUNION TABLE\*
- E04 CRESCENCE TABLE\*
- E05 OFFERTORY TABLE
- E06 LECTERN
- E07 PULPIT
- E08 PEW
- E09 STACKING PEW CHAIR WITH KNEELER
- E10 CHANCEL CHAIR
- E11 STACKING CHAIR FOR CHOIR
- E12 BAPTISMAL FONT
- E13 KNEELER/PRIE-DIEU WITH SCREEN
- E14 ALTAR RAIL UNIT
- E15 PORTABLE ALTAR

##### ACCESSORIES:

- A01 SMALL TRASH RECEPTACLE
- A02 LARGE TRASH RECEPTACLE
- A03 PAPER RECYCLE RECEPTACLE
- A04 TOILET RECEPTACLE

##### DESKS AND STORAGE:

- D01 U-SHAPED WORKSTATION, R-RETURN
- D02 U-SHAPED WORKSTATION, L-RETURN
- D03 NOT USED
- D04 NOT USED
- D05 NOT USED
- D06 NOT USED
- D07 NOT USED
- D08 L-SHAPED WORKSTATION, L-RETURN
- D09 NOT USED
- D10 LATERAL FILE W/ SHELVING

##### MISCELLANEOUS:

- M01 PORTABLE PODIUM
- M02 MEDIUM EQUIPMENT CART
- M03 SMALL EQUIPMENT CART
- M04 ORGAN
- M05 GRAND PIANO
- M06 BABY GRAND PIANO
- M07 UPRIGHT PIANO
- M08 REFRIGERATOR
- M09 RANGE
- M10 DISHWASHER
- M11 ICE MACHINE
- M12 UNDERCOUNTER REFRIGERATOR
- M13 MICROWAVE
- M14 WARMING DRAWER
- M15 KEYBOARD/SYNTHESIZER
- M16 OUTDOOR FURNITURE\*
- M17 PORTABLE PROJECTOR
- M18 TV, FLAT SCREEN
- M19 MEDIA PLAYER
- M20 NOT USED
- M21 NOT USED
- M22 NOT USED
- M23 CRIB
- M24 STAGE
- M25 STAGE DOLLY
- M26 KIOSK
- M27 PORTABLE PROJECTION SCREEN

##### SEATING:

- S01 DESK CHAIR
- S02 NOT USED
- S03 GUEST CHAIR
- S04 LOUNGE CHAIR
- S05 NOT USED
- S06 STACKING CHAIR
- S07 STACKING CHAIR DOLLY
- S08 NOT USED
- S09 NOT USED
- S10 SMALL CHILDREN'S CHAIR
- S11 NOT USED
- S12 ROCKER/GLIDER

##### TABLES:

- T01 MULTI-PURPOSE TABLE, 72" X 30"
- T02 CHILDREN'S TABLE
- T03 TABLE DOLLY (72" X 30" TABLE)
- T04 LOBBY END TABLE
- T05 END TABLE
- T06 30" DIA TABLE

##### NOTES:

1. ITEMS IDENTIFIED WITH AN ASTERISK IN THE LEGEND ARE OPTIONAL. COORDINATE REQUIREMENT WITH THE USER.
2. REFER TO INTERIOR SPECIALTIES SECTION AND A-SERIES DRAWINGS FOR LOCATIONS OF MARKERBOARDS, PRESENTATION BOARDS AND SIMILAR TYPE ITEMS.
3. REFER TO INTERIOR SPECIALTIES SECTION FOR LOCATIONS AND REQUIREMENTS FOR TOILET RECEPTACLES.



US Army Corps of Engineers  
OMAHA DISTRICT

DESIGNED BY:	DATE: 10/2012
DRAWN BY:	CKG BY:
SUBMITTED BY:	CONTRACT NO.:
PLOT SCALE:	FILE NUMBER:
PLOT DATE:	FILE NAME:
SIZE:	sheet_size.dgn

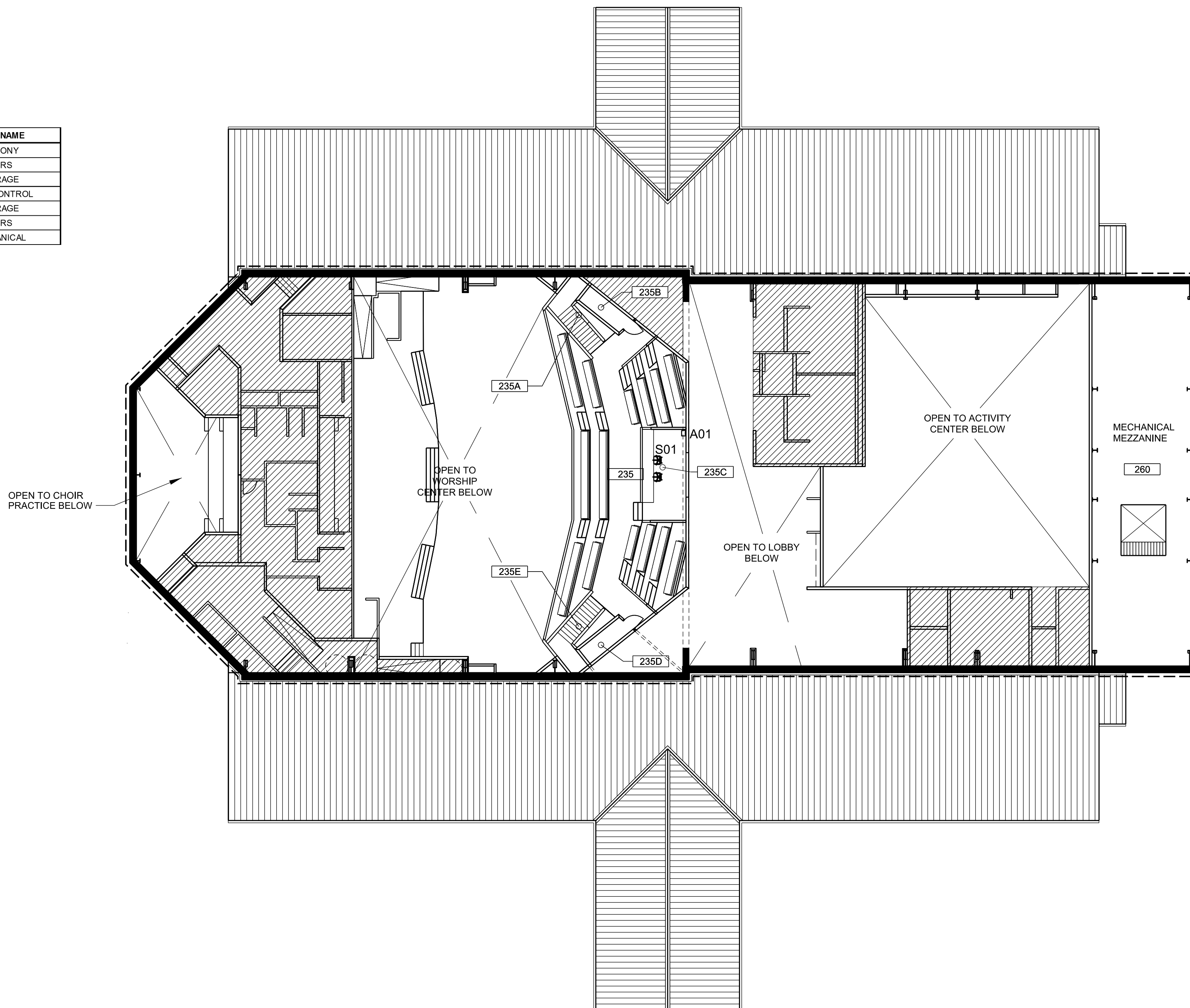
US ARMY ENGINEER DISTRICT  
CORPS OF ENGINEERS  
OMAHA, NEBRASKA

VARIOUS LOCATIONS  
3D BIM TRANSLATION - ARMY STANDARD DESIGN  
SMALL CHAPEL  
BASIC MINISTRY SERIES  
FIRST FLOOR FURNITURE PLAN

SHEET IDENTIFICATION  
I-110

D  
C  
B  
A

ROOM #	ROOM NAME
235	BALCONY
235A	STAIRS
235B	STORAGE
235C	MEDIA CONTROL
235D	STORAGE
235E	STAIRS
260	MECHANICAL



### SECONDD FLOOR FURNITURE PLAN

SCALE: 1/16" = 1'-0"

#### FURNITURE AND EQUIPMENT LEGEND

**ECCLASIASTICAL EQUIPMENT:**  
 E01 ALTAR  
 E02 ALTAR, SMALL  
 E03 COMMUNION TABLE\*  
 E04 CRENDENCE TABLE\*  
 E05 OFFERTORY TABLE  
 E06 LECTERN  
 E07 PULPIT  
 E08 PEW  
 E09 STACKING PEW CHAIR WITH KNEELER  
 E10 CHANCEL CHAIR  
 E11 STACKING CHAIR FOR CHOIR  
 E12 BAPTISMAL FONT  
 E13 KNEELER/PRIE-DIEU WITH SCREEN  
 E14 ALTAR RAIL UNIT  
 E15 PORTABLE ALTAR

**ACCESSORIES:**  
 A01 SMALL TRASH RECEPTACLE  
 A02 LARGE TRASH RECEPTACLE  
 A03 PAPER RECYCLE RECEPTACLE  
 A04 TOILET RECEPTACLE

**DESKS AND STORAGE:**  
 D01 U-SHAPED WORKSTATION, R-RETURN  
 D02 U-SHAPED WORKSTATION, L-RETURN  
 D03 NOT USED  
 D04 NOT USED  
 D05 NOT USED  
 D06 NOT USED  
 D07 NOT USED  
 D08 L-SHAPED WORKSTATION, L-RETURN  
 D09 NOT USED  
 D10 LATERAL FILE W/ SHELVING

**MISCELLANEOUS:**  
 M01 PORTABLE PODIUM  
 M02 MEDIUM EQUIPMENT CART  
 M03 SMALL EQUIPMENT CART  
 M04 ORGAN  
 M05 GRAND PIANO  
 M06 BABY GRAND PIANO  
 M07 UPRIGHT PIANO  
 M08 REFRIGERATOR  
 M09 RANGE  
 M10 DISHWASHER  
 M11 ICE MACHINE  
 M12 UNDERCOUNTER REFRIGERATOR  
 M13 MICROWAVE  
 M14 WARMING DRAWER  
 M15 KEYBOARD/SYNTHESIZER  
 M16 OUTDOOR FURNITURE\*  
 M17 PORTABLE PROJECTOR  
 M18 TV, FLAT SCREEN  
 M19 MEDIA PLAYER  
 M20 NOT USED  
 M21 BAPTISTERY MAT, SMALL  
 M22 NOT USED  
 M23 CRIB  
 M24 STAGE  
 M25 STAGE DOLLY  
 M26 KIOSK  
 M27 PORTABLE PROJECTION SCREEN

**SEATING:**  
 S01 DESK CHAIR  
 S02 NOT USED  
 S03 GUEST CHAIR  
 S04 LOUNGE CHAIR  
 S05 NOT USED  
 S06 STACKING CHAIR  
 S07 STACKING CHAIR DOLLY  
 S08 NOT USED  
 S09 NOT USED  
 S10 SMALL CHILDREN'S CHAIR  
 S11 NOT USED  
 S12 ROCKER/GLIDER

**TABLES:**  
 T01 MULTI-PURPOSE TABLE, 72" X 30"  
 T02 CHILDREN'S TABLE  
 T03 TABLE DOLLY (72" X 30" TABLE)  
 T04 LOBBY END TABLE  
 T05 END TABLE  
 T06 30" DIA TABLE

**NOTES:**  
 1. ITEMS IDENTIFIED WITH AN ASTERISK IN THE LEGEND ARE OPTIONAL. COORDINATE REQUIREMENT WITH THE USER.  
 2. REFER TO INTERIOR SPECIALTIES SECTION AND A-SERIES DRAWINGS FOR LOCATIONS OF MARKERBOARDS, PRESENTATION BOARDS AND SIMILAR TYPE ITEMS.  
 3. REFER TO INTERIOR SPECIALTIES SECTION FOR LOCATIONS AND REQUIREMENTS FOR TOILET RECEPTACLES.



US Army Corps of Engineers  
OMAHA DISTRICT

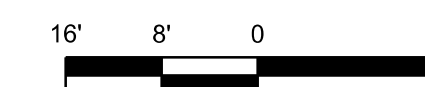
DATE	DESCRIPTION	APPR

DESIGNED BY:	CHK BY:	SUBMITTED BY:	DATE:	DATE:	DATE:
SOLICITATION NO.:		CONTRACT NO.:		FILE NUMBER:	

US ARMY ENGINEER DISTRICT  
 CORPS OF ENGINEERS  
 OMAHA, NEBRASKA

VARIOUS LOCATIONS  
 3D BIM TRANSLATION - ARMY STANDARD DESIGN  
 SMALL CHAPEL  
 BASIC MINISTRY SERIES  
 SECOND FLOOR FURNITURE PLAN

SHEET IDENTIFICATION  
**I-120**



SCALE: 1/16" = 1'-0"